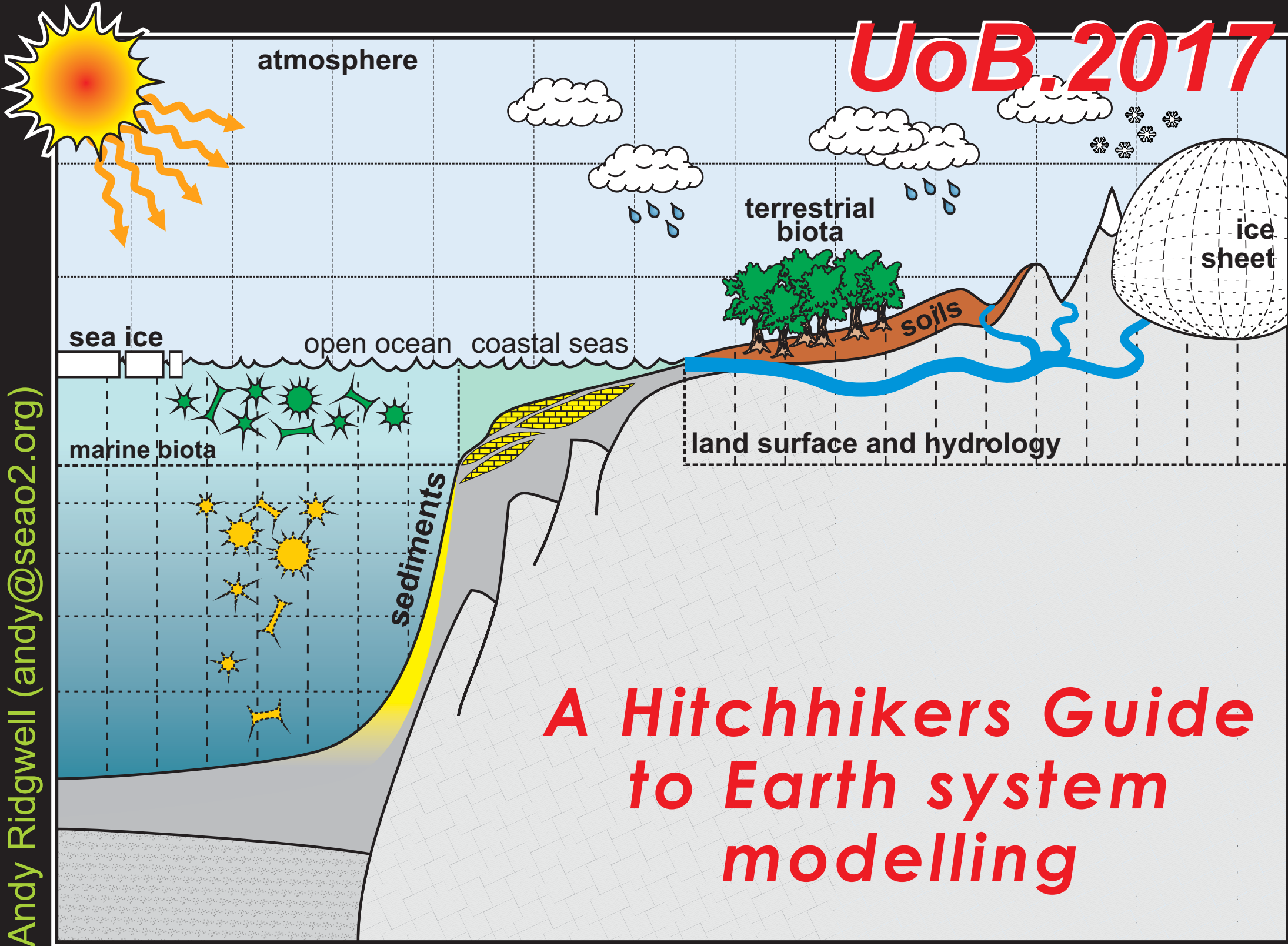


UoB.2017



Andy Ridgwell (andy@seao2.org)

**A Hitchhikers Guide
to Earth system
modelling**

Andy's, like, whatever pages

cGENIE EMIC

mycgenie.seao2.org

BUCK IT

I'm not coding shit today.



Home

cGENIE Earth system model

Publications

Talks/seminars

Teaching

Miscellaneous

Get me out of here!

Poni

GENIE project website (RIP)



got data?

Ocean observations
[netCDF format file
and on cGENIE grid]

got muffin?

Quick-start Guides:
(1) Bristol cluster
(2) generic linux
(3) Mac
(4) windows
general:
READ-ME

got software?

linux netCDF 4.0
source code
Simple Windoz SSH
client

mailing lists

CGENIE-DISCUSS
@GENIE_ESM

cGENIE resources: DOCUMENTATION

WARNING: Documentation in varying degrees of not updatedness ...

SEE: genie-docs SUBDIRECTORY FOR THE CURRENT .ps AND .pdf DOCUMENTATION BUILDS (as well as latex source)

(1) Current 'muffin' version of cGENIE:

The soon-to-be infamous **Quick-start Guide** (also see platform-specific variant -- box on left) plus the all important and vital **READ-ME** that you inevitably will not read ...

User manual, with details of the namelist parameters given in a separate and shocking incomplete/outdated Table.

Various model experiment **EXAMPLES**, including example model configurations, experimental designs, and associated namelist parameter descriptions.

The cGENIE **HOW-TO** - potted explanations of how to get useful stuff done, e.g., spinning up deep-sea sediment distributions.

(2) Original cGENIE branch:

cGENIE (biogeochemistry focused) User manual.

Various model experiment **EXAMPLES**.

The cGENIE **HOW-TO**.

The soon-to-be infamous Quick-start Guide.

cGENIE resources: WORKSHOPS [CURRENT -- AWI.2015]

INFO:

Workshop outline.

Lab instructions:

Lesson #0 == cGENIE modelling basics

Lesson #1 == Snowball Earth + experiments in climate hysteresis.

Lesson #2 == Ocean circulation and overturning stability.

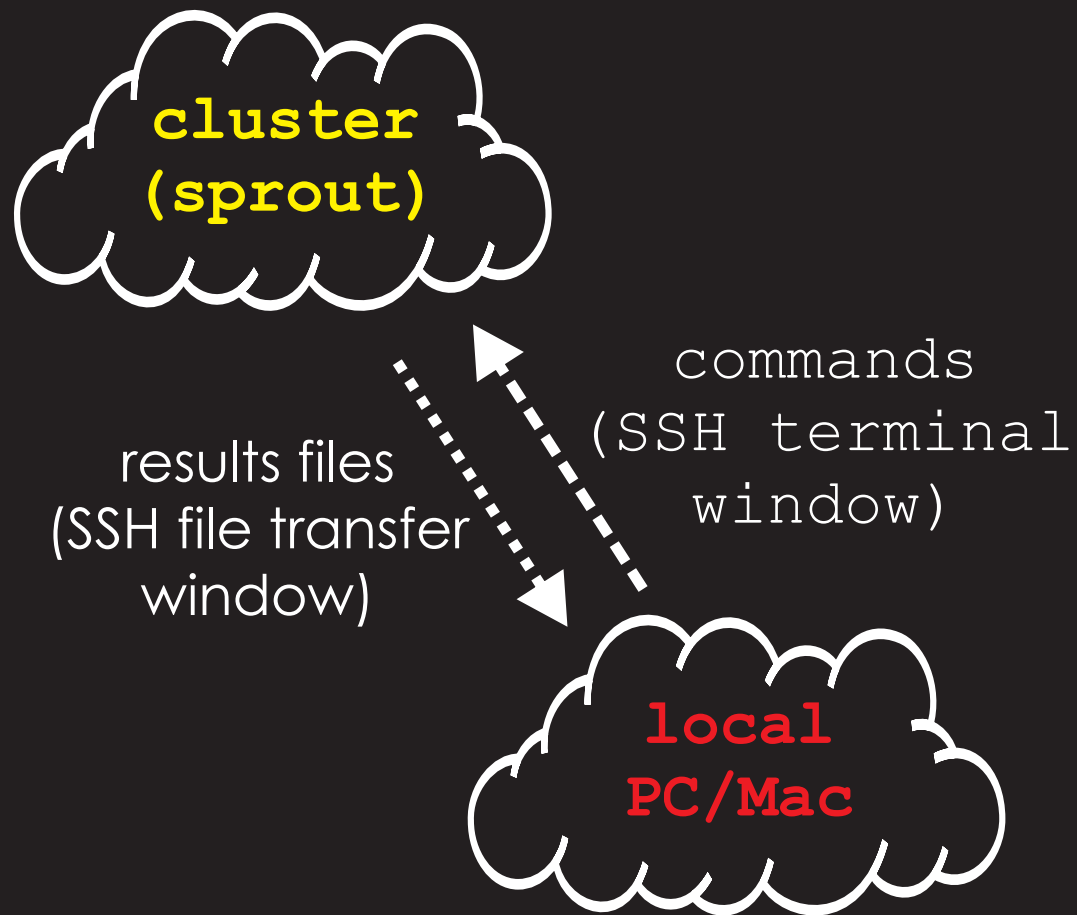
cGENIE resources: TEACHING LABS [OLD -- GEOGM1110 / GEOGM1404]

INFO: Course outline; non-intimidating linux 101 (MLP version).

Lab instructions: Session #0000 == cGENIE modelling basics + experiments in climate hysteresis // Session #0001 == Ocean circulation and overturning stability // Session #0100 == Fossil fuel CO₂ release and 'ocean acidification' plus a supplement summarizing ocean acidification relevant results variables, and both together in a revised Session #0100 document // Session #0101: GEOGM1110 == Engineering the carbon cycle (GEOGM1110) // Session #0101: GEOGM1404 == Engineering the carbon cycle (GEOGM1404).



Start (/stop) model experiments
Edit (configuration) files
(**SciTE**/other editor)
Visualize results (**Panoply**)

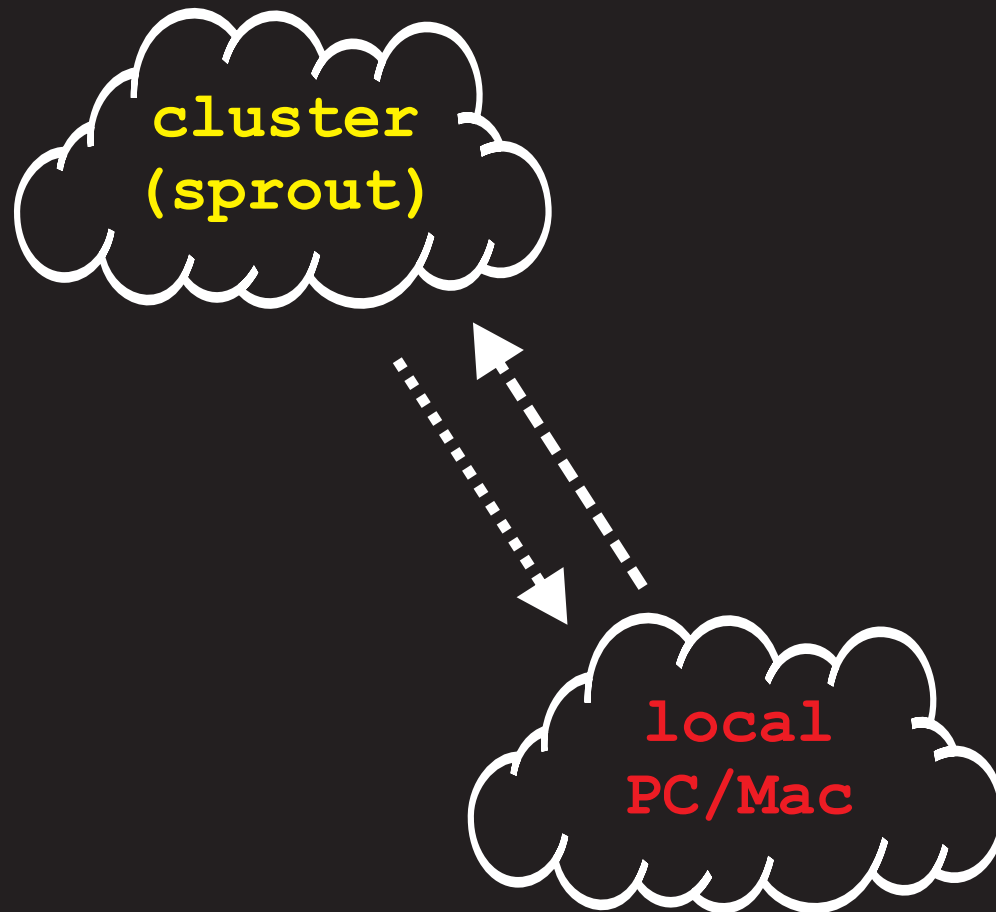


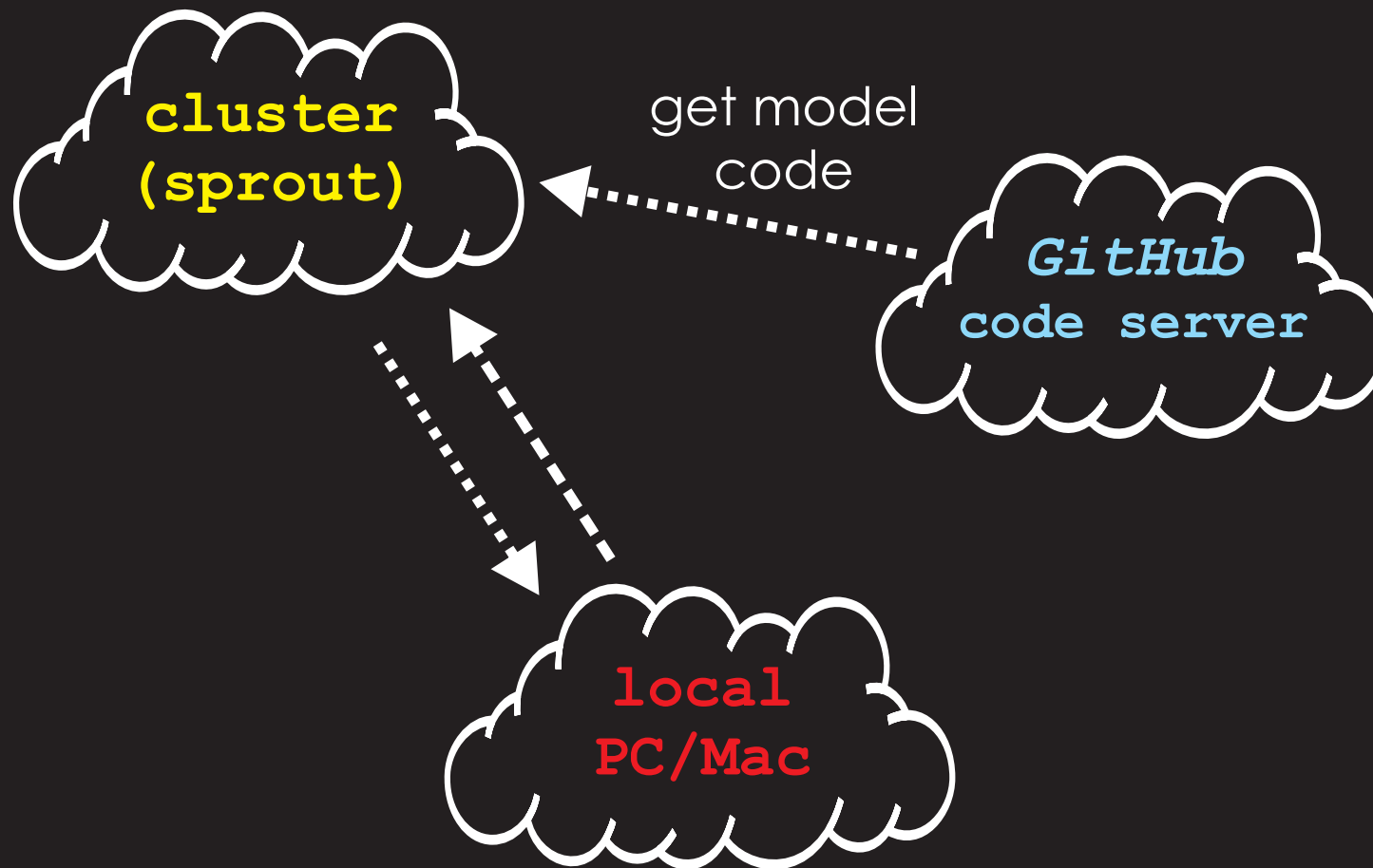
Works in groups of 3s / 2s

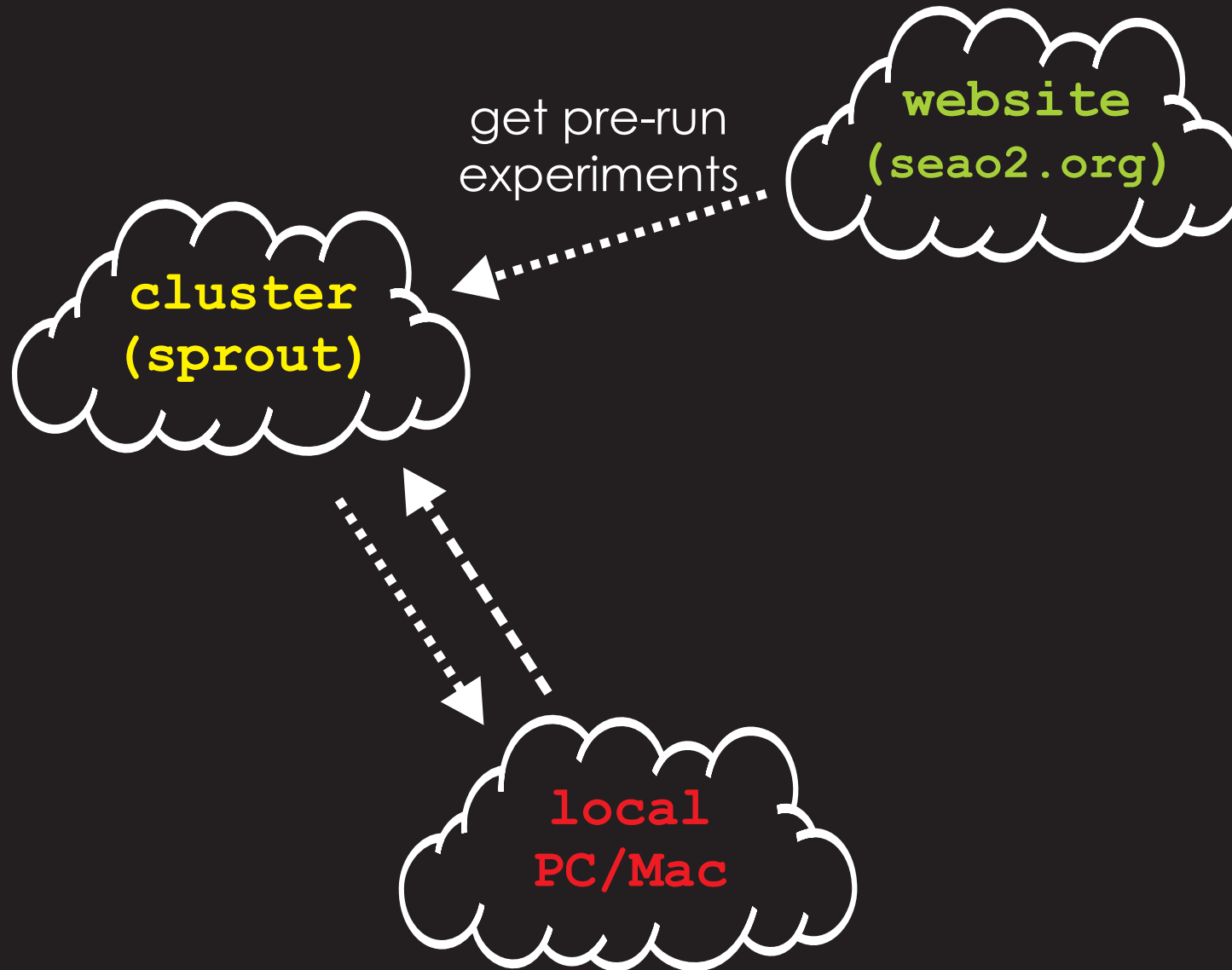
sprout cluster account names:

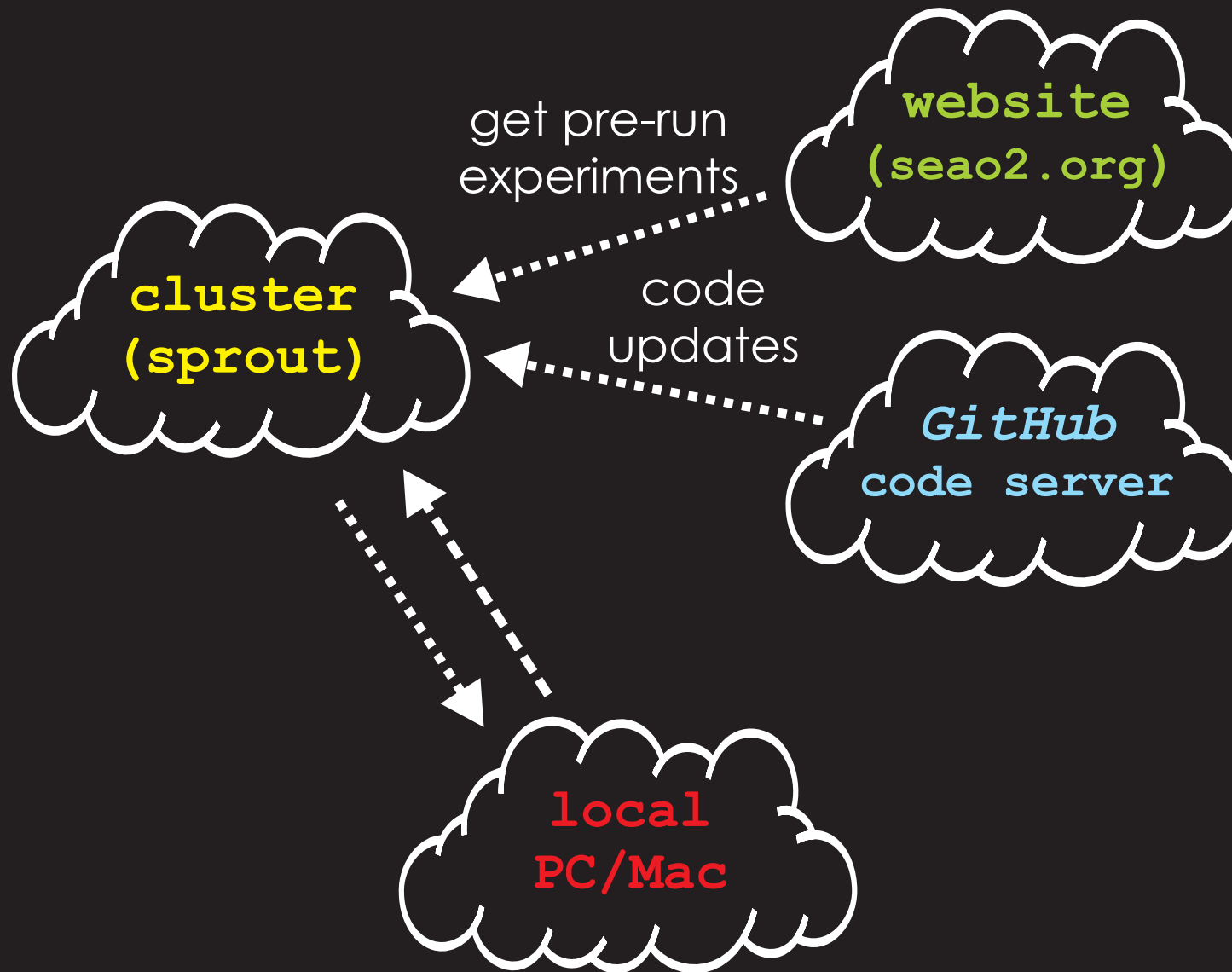
cgenie_1, cgenie_2, cgenie_3,
cgenie_4, ... cgenie_9

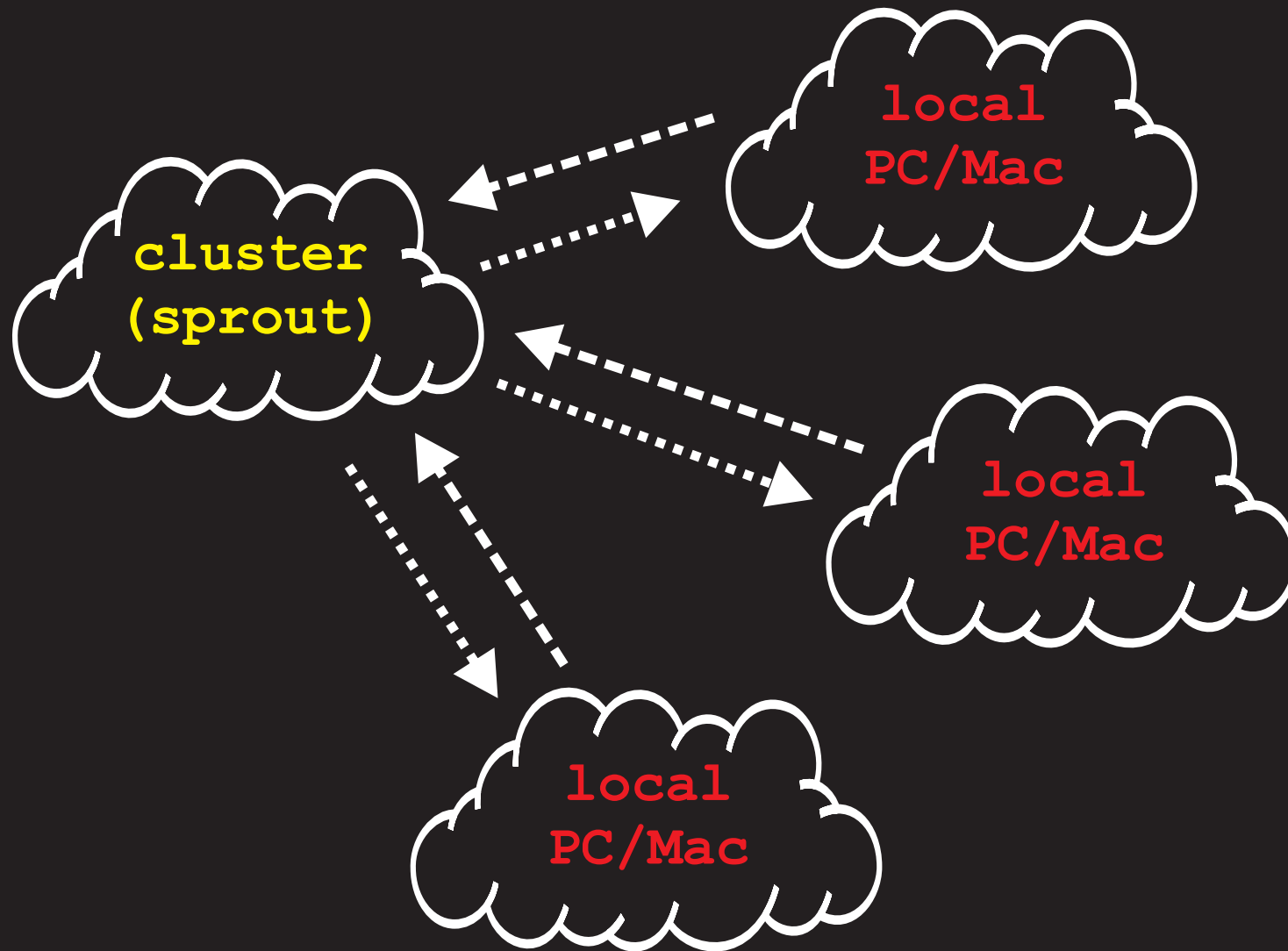
Password: ???????? (the same for all)

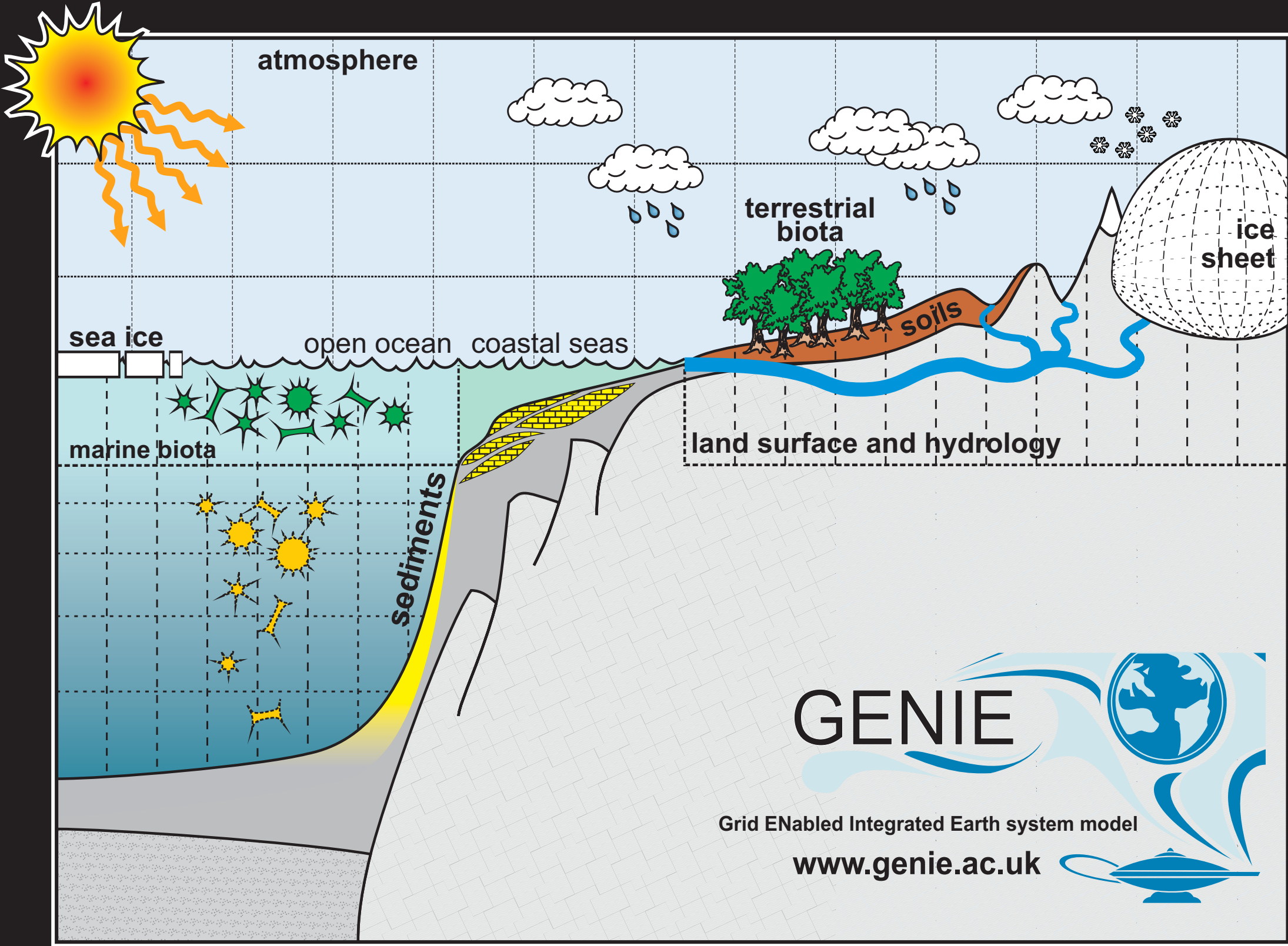












GENIE

Grid ENabled Integrated Earth system model

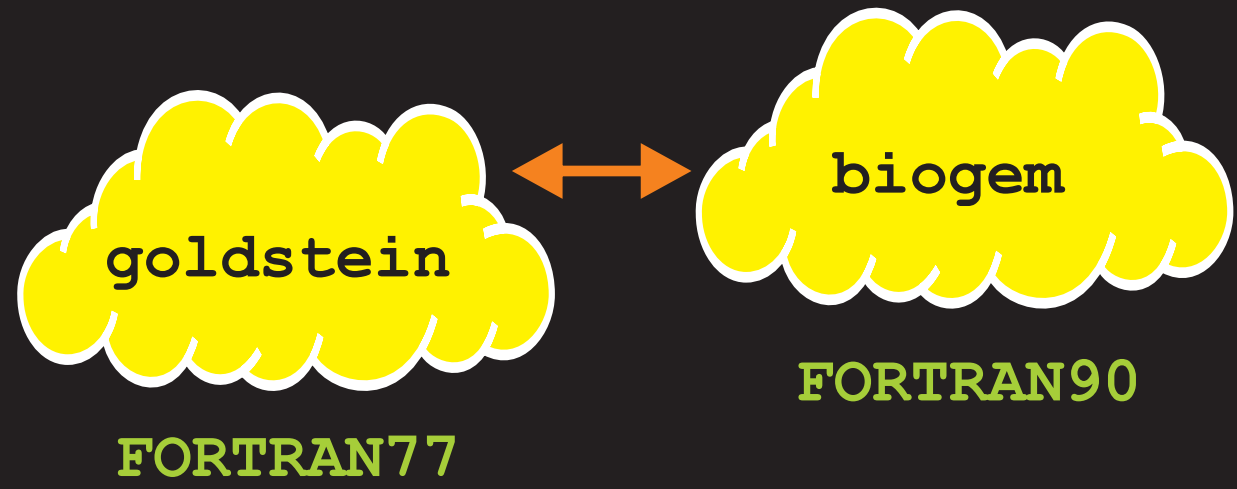
www.genie.ac.uk

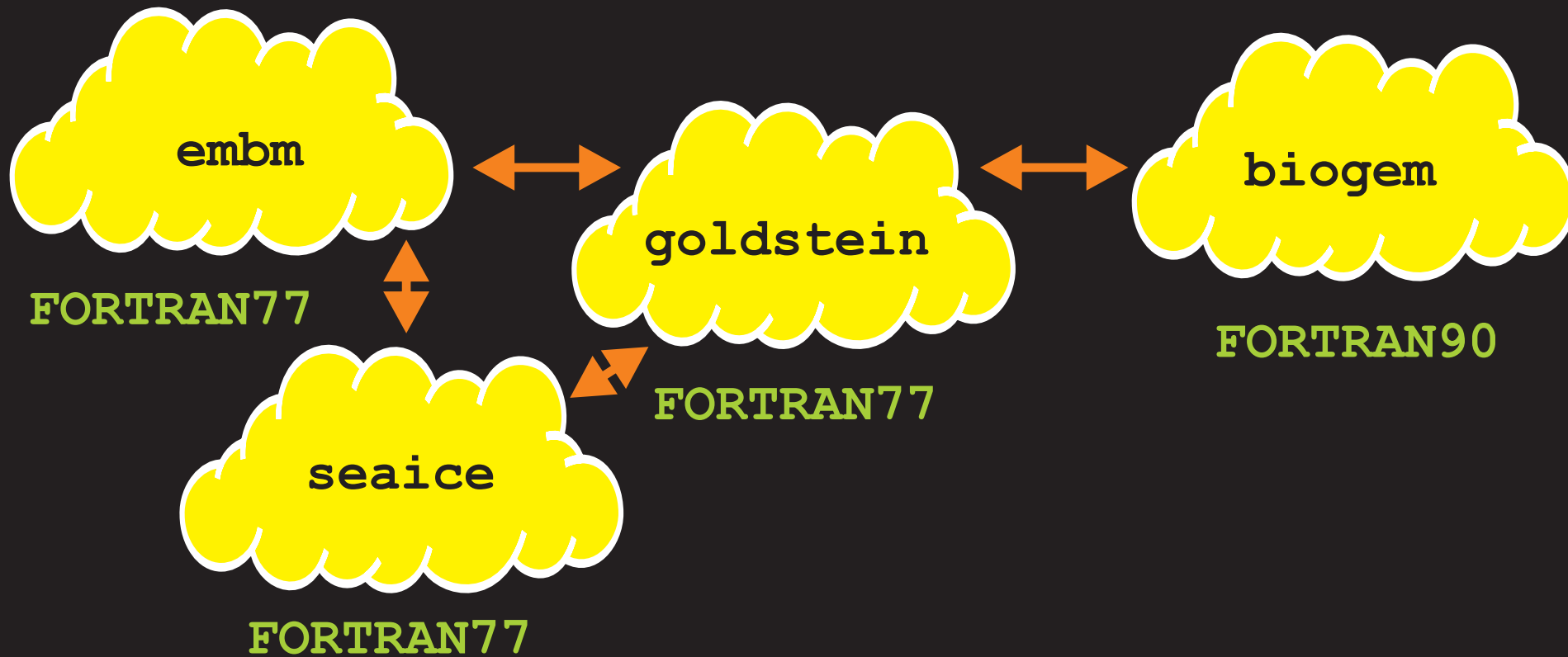


goldstein

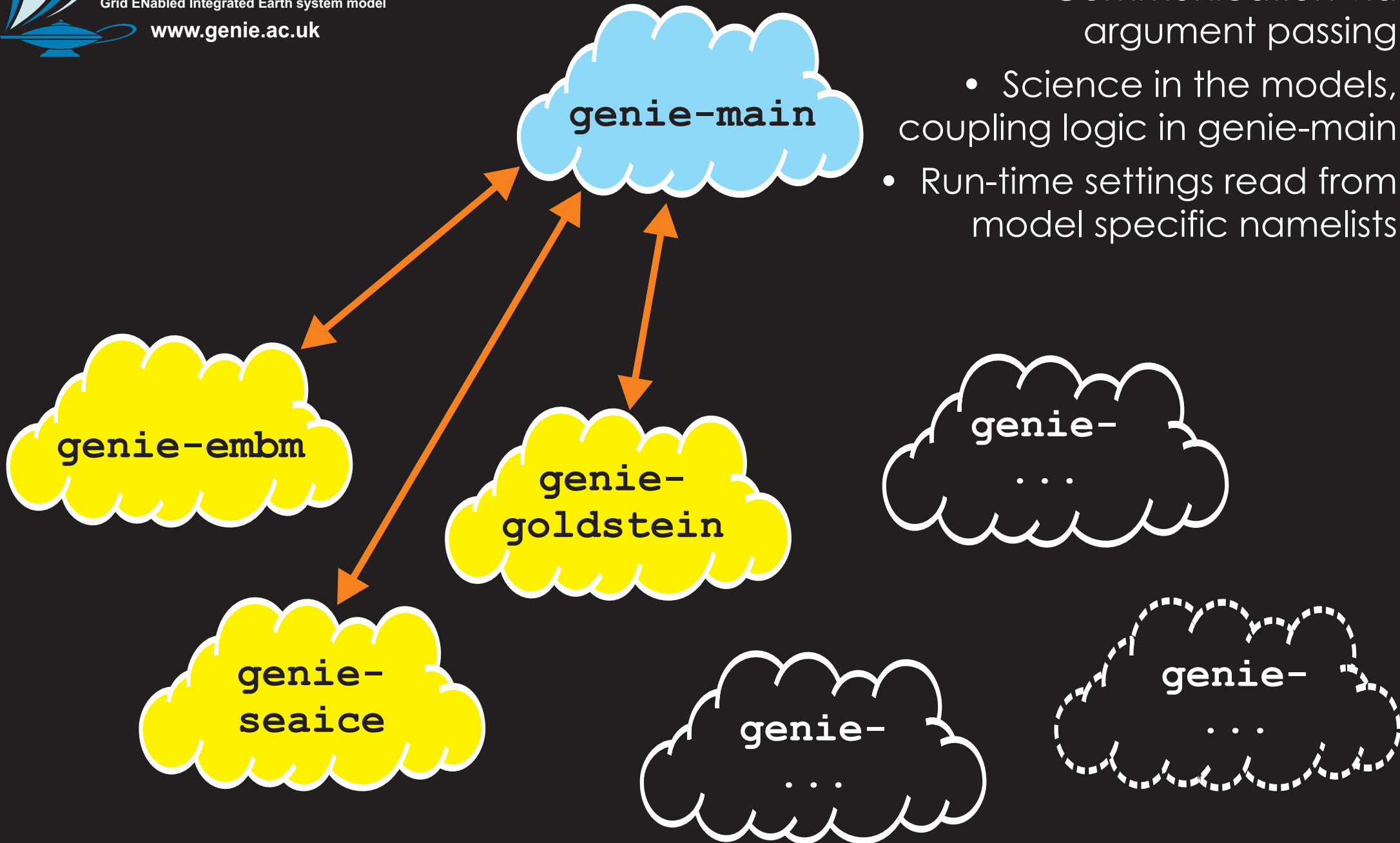


FORTAN77





BASH, Python

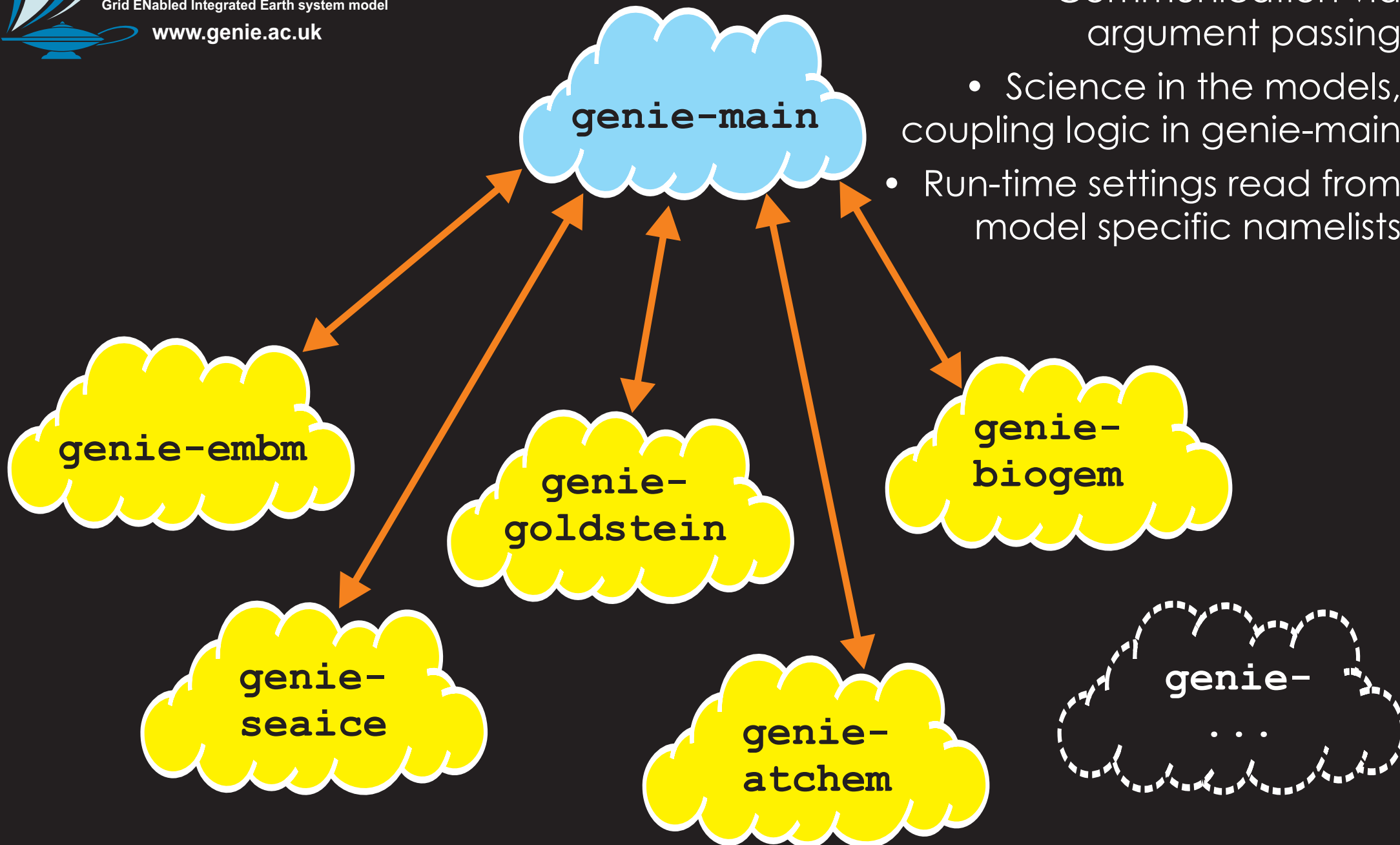


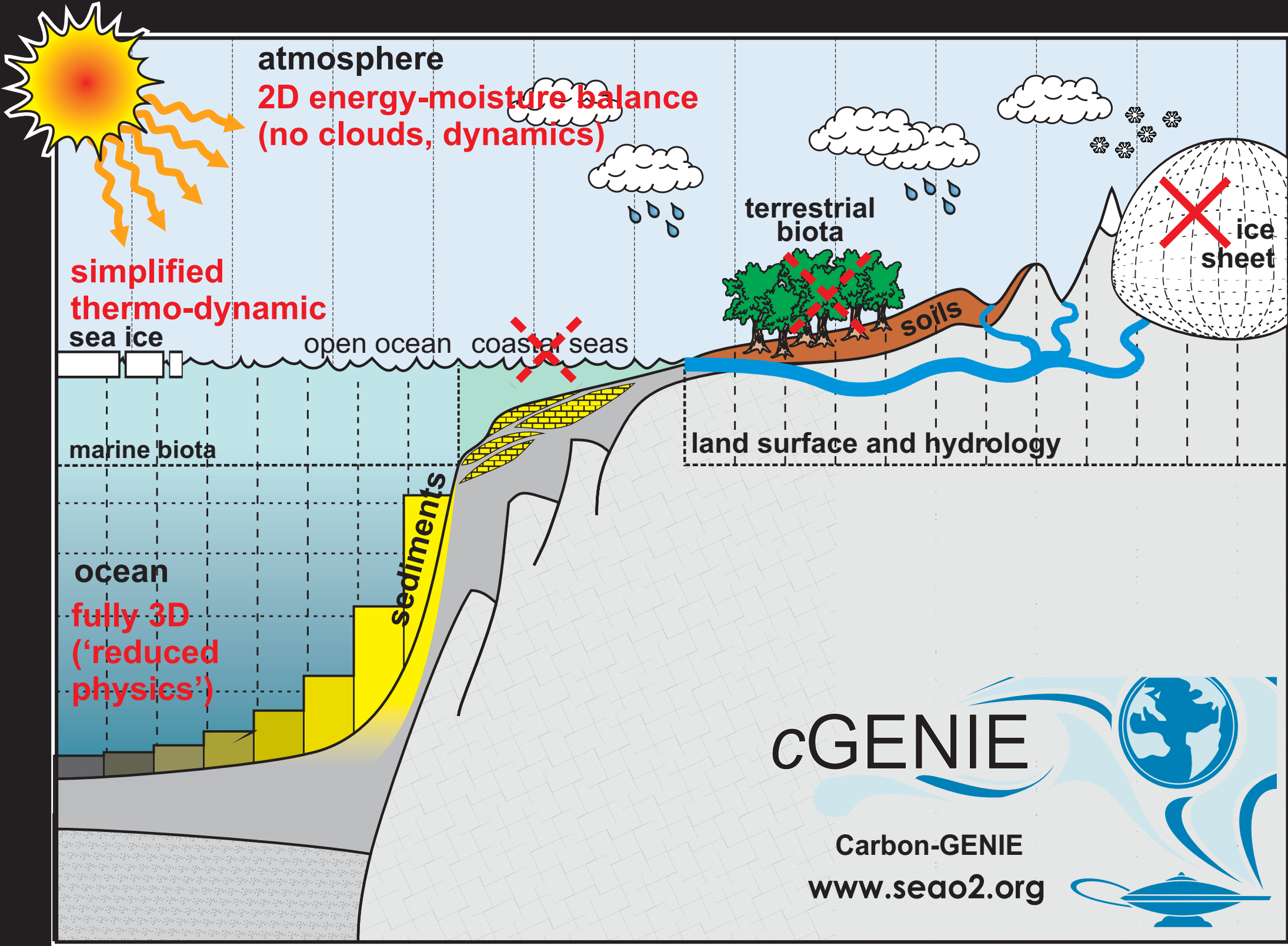
Modular, Hierarchical

- Communication via argument passing
- Science in the models, coupling logic in genie-main
- Run-time settings read from model specific namelists

Modular, Hierarchical

- Communication via argument passing
- Science in the models, coupling logic in genie-main
- Run-time settings read from model specific namelists





atmosphere
2D energy-moisture balance
(no clouds, dynamics)

simplified thermo-dynamic

sea ice

open ocean ~~coastal seas~~

marine biota

ocean
fully 3D
("reduced physics")

sediments

terrestrial biota

soils

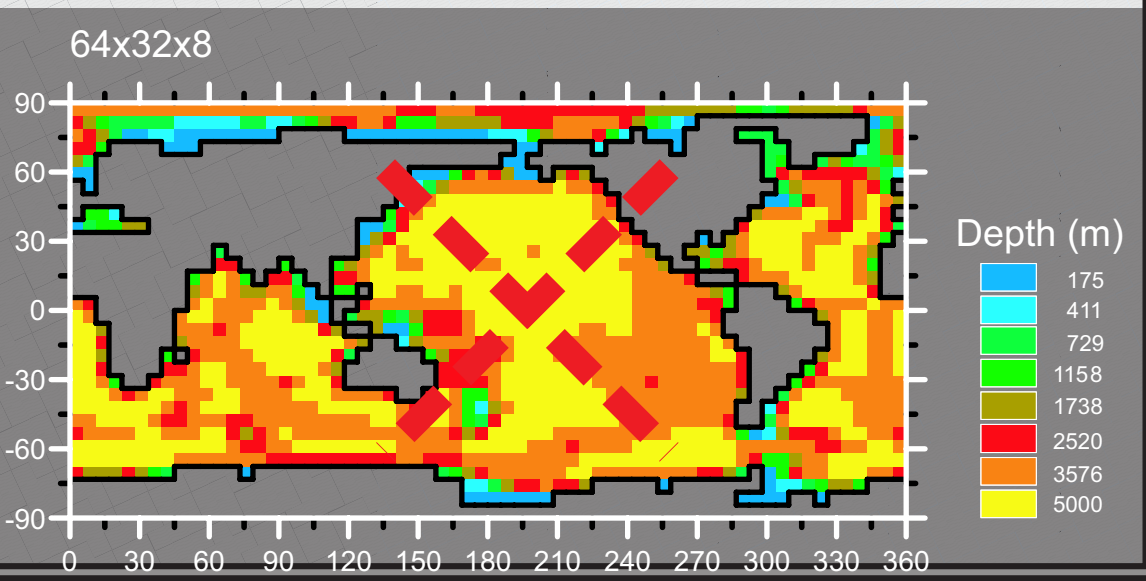
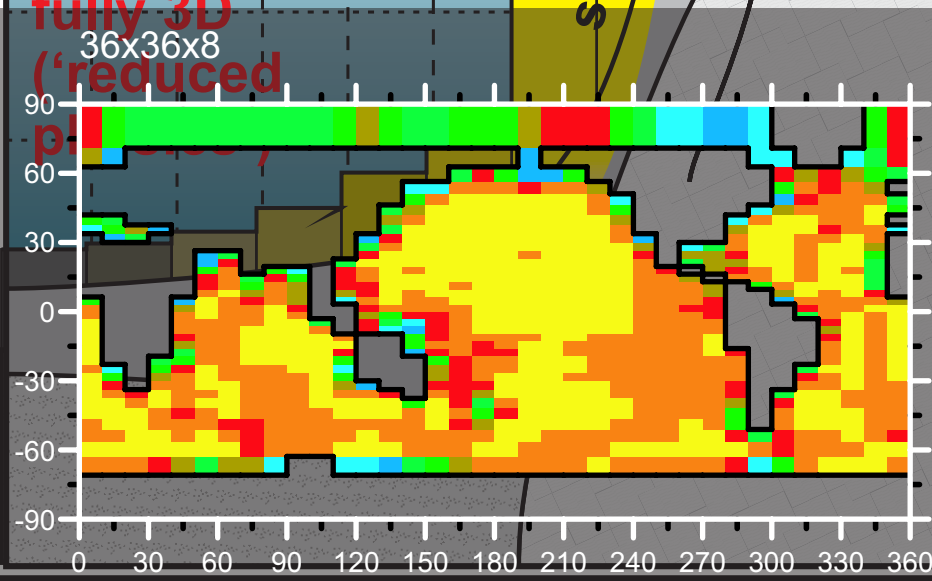
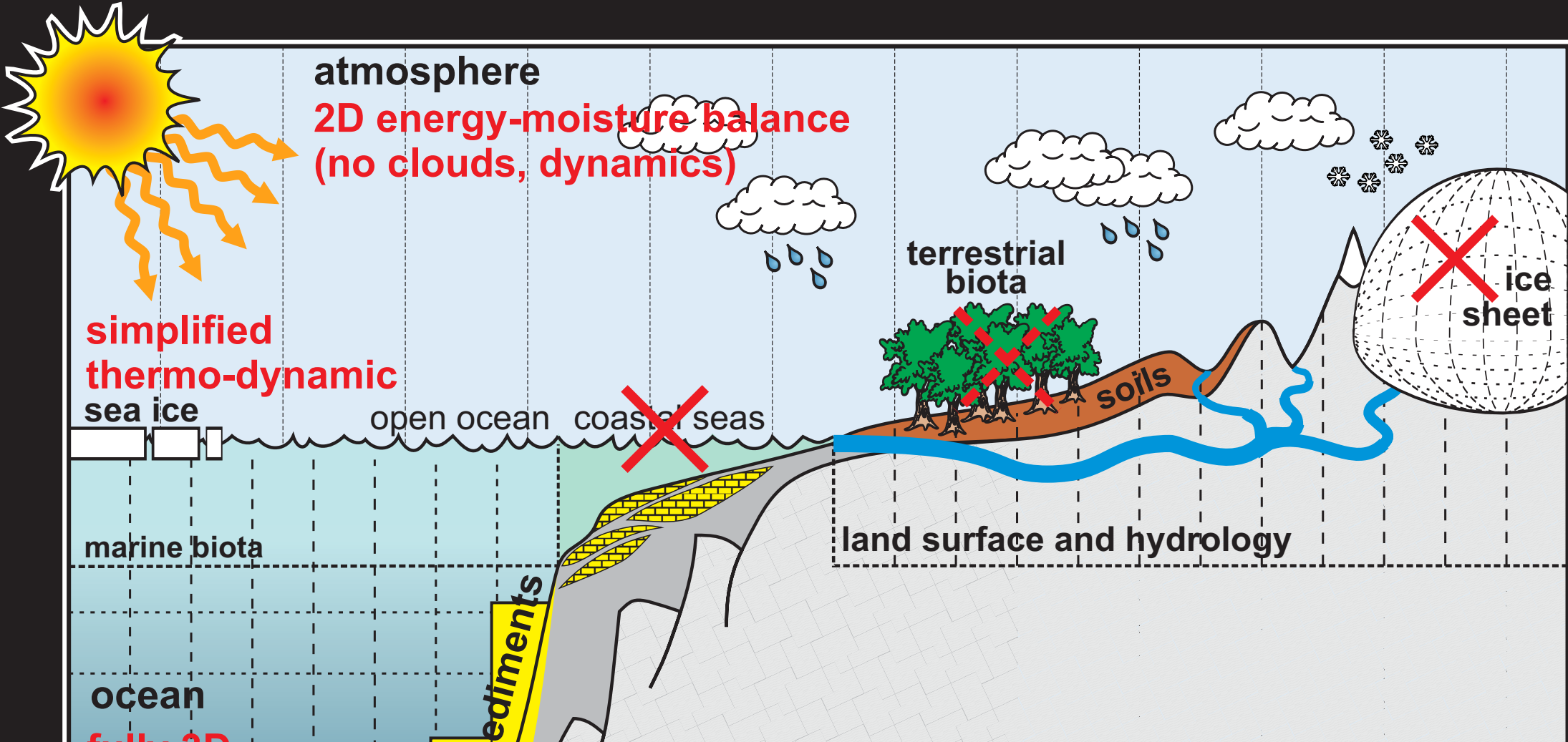
~~ice sheet~~

land surface and hydrology

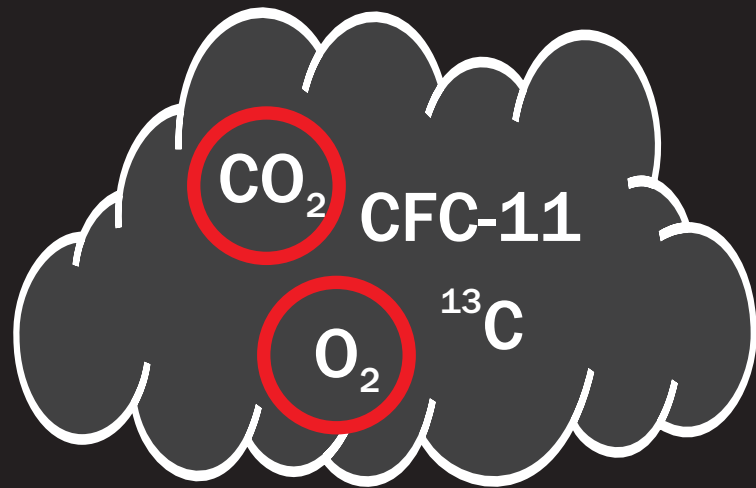
cGENIE

Carbon-GENIE
www.seao2.org

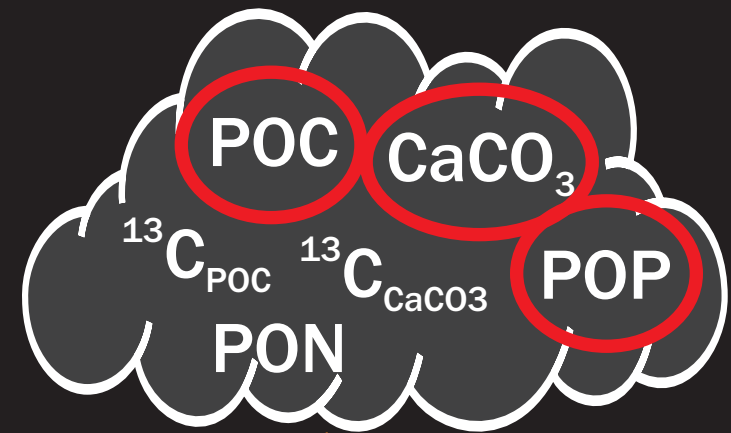




atmospheric tracers (gases)



biogeochemistry
solid tracers (particulates)



solubility coefficient
Schmidt number

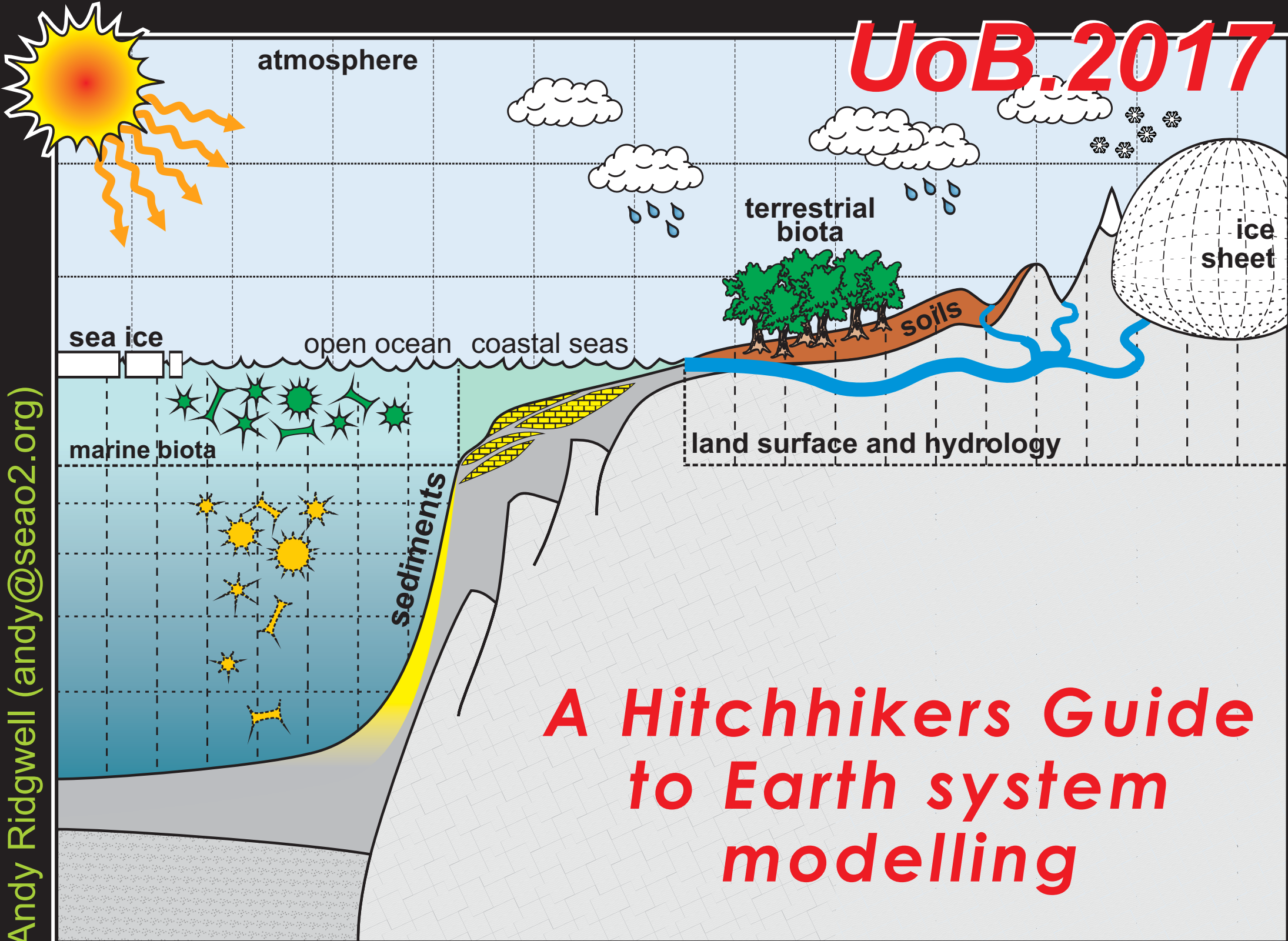
PRE-DEFINED
RELATIONSHIPS

e.g., Redfield ratios



dissolved tracers

UoB.2017



Andy Ridgwell (andy@seao2.org)

**A Hitchhikers Guide
to Earth system
modelling**